

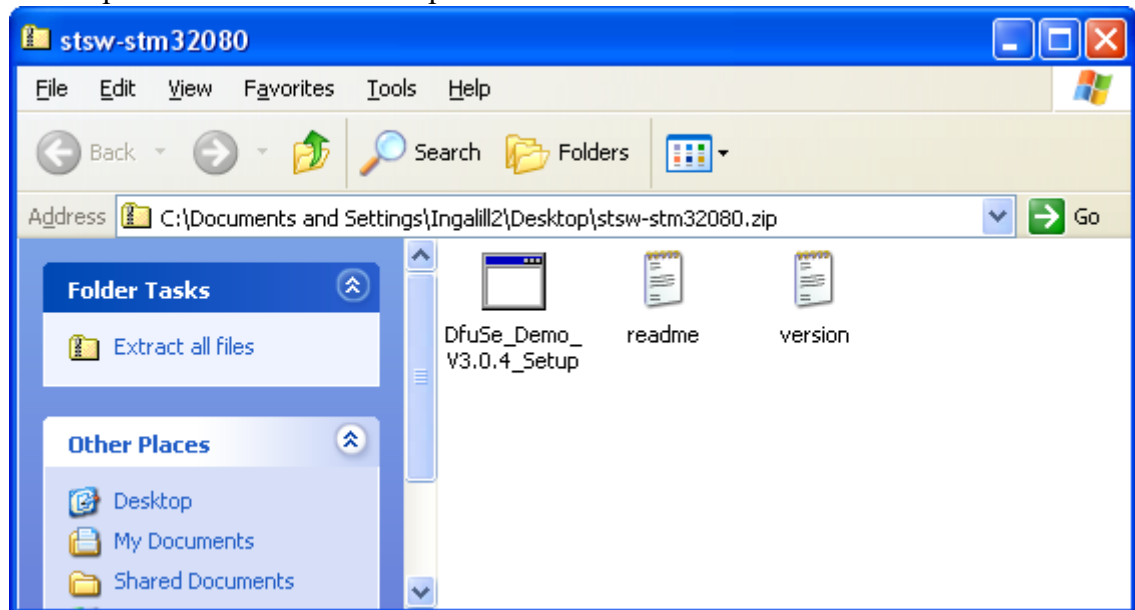
Upgrade via SD-Card.

To be able to upgrade via SD-Card the EasySplicer needs to have a firmware installed with a version number greater than V3.00.00 If not continue to the next page and upgrade via USB.

1. Copy the file fw.hex to a FAT32 formatted SD-Card (MAX 32GB) (standard format of a new SD-Card).
2. Insert SD-Card into the EasySplicer.
3. Connect the charger.
4. Answer YES when asked if You want to install this firmware.
5. Wait for the upgrade to finish. It will take about half a minute.
6. Remove SD-Card and charger.
7. Done

How to install software and USB-drivers for EasySplicer firmware upgrade.

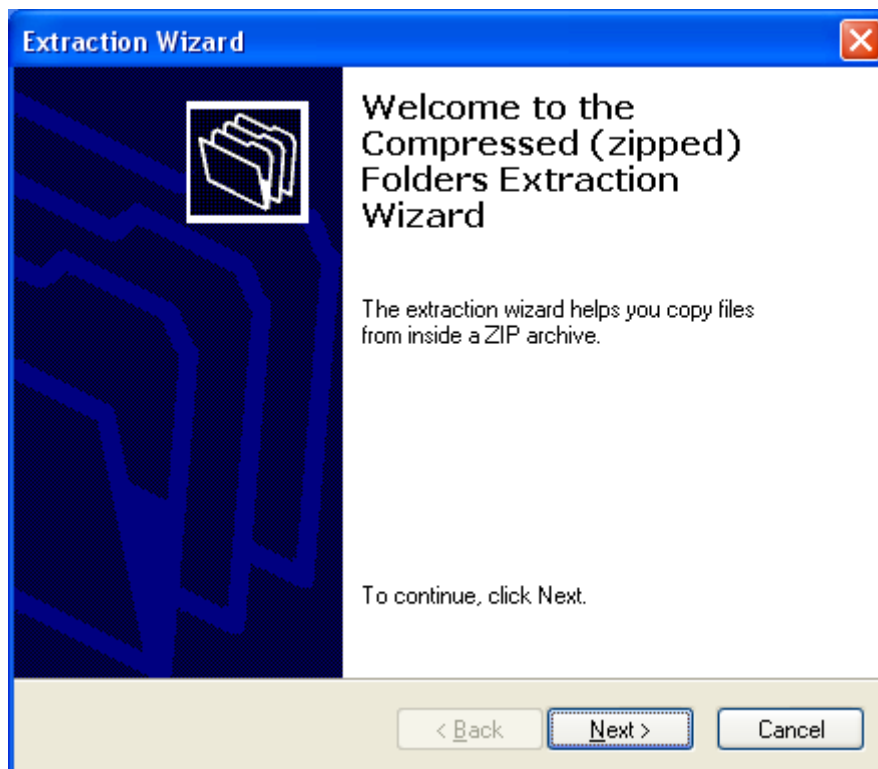
1. Open the stsw-stm32080.zip file.



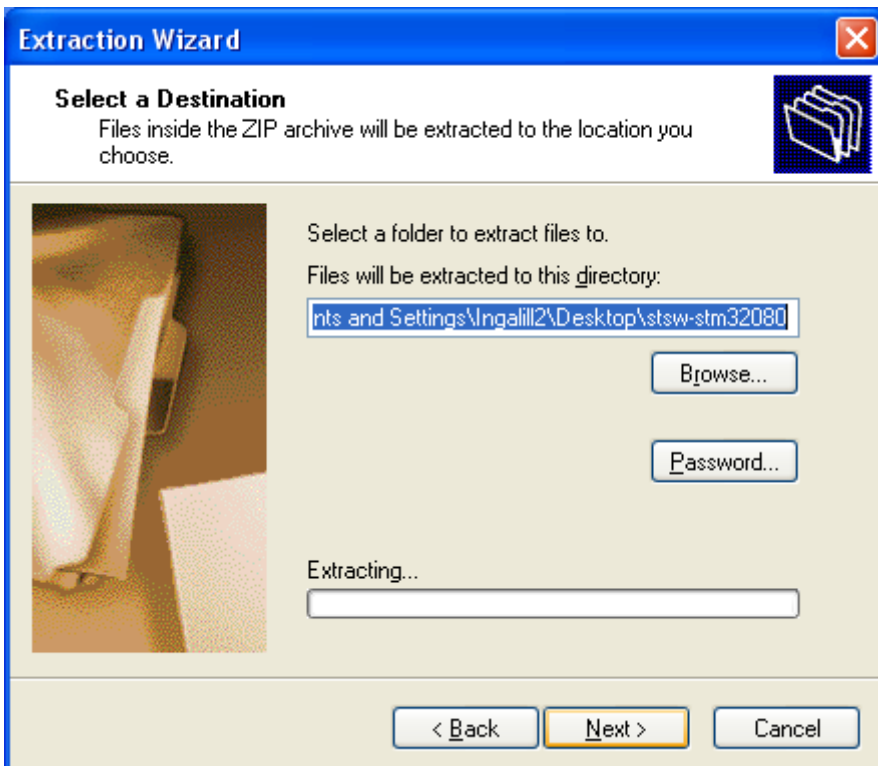
2. Start DfuSe Demo V3.0.4 Setup program.



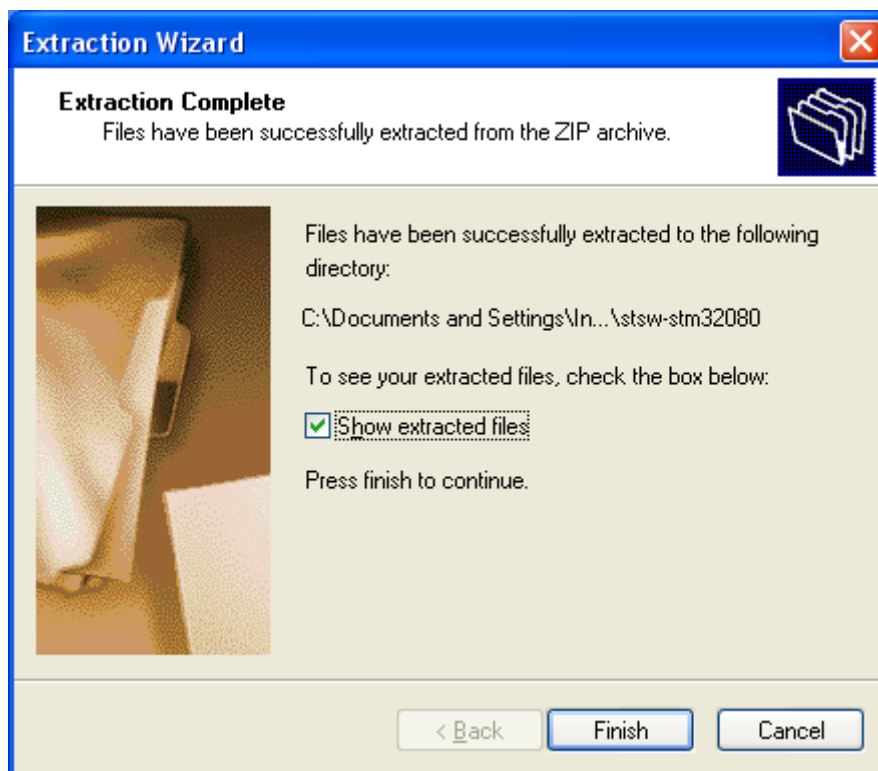
3. Click Extract all.



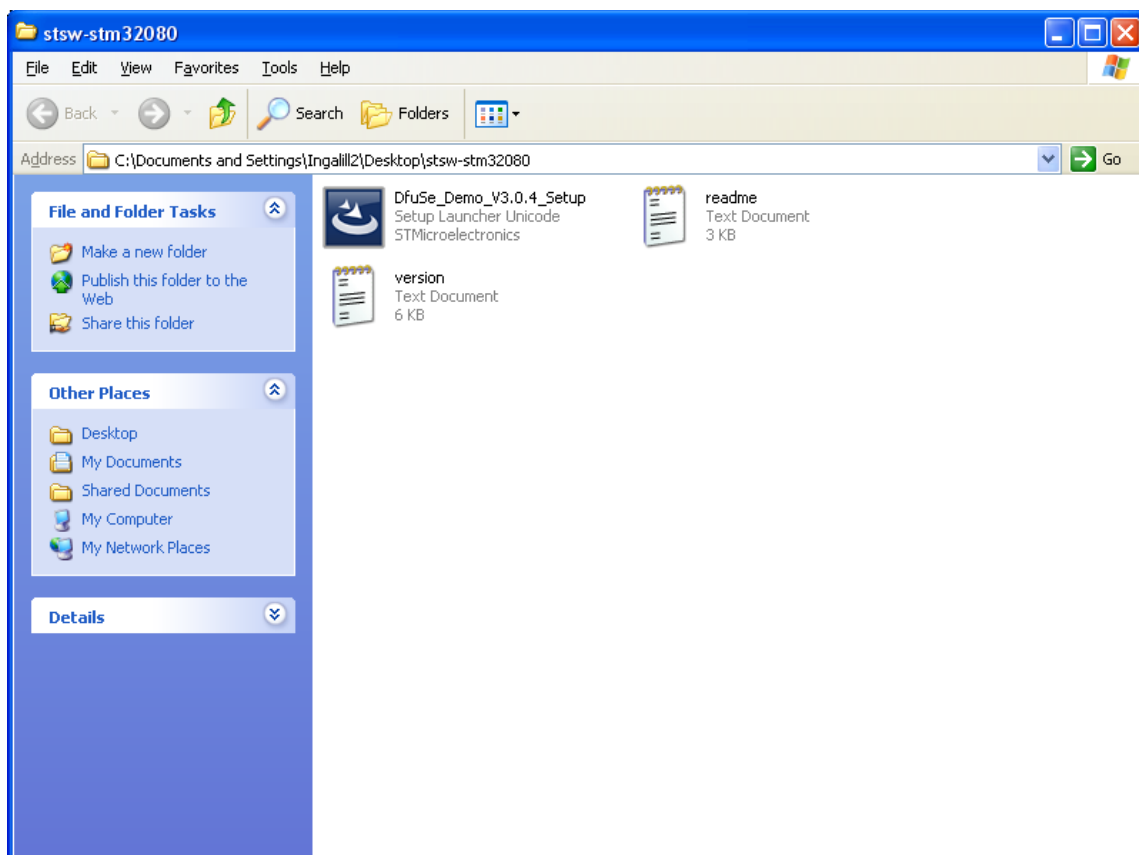
4. Click Next.



5. Click Next.



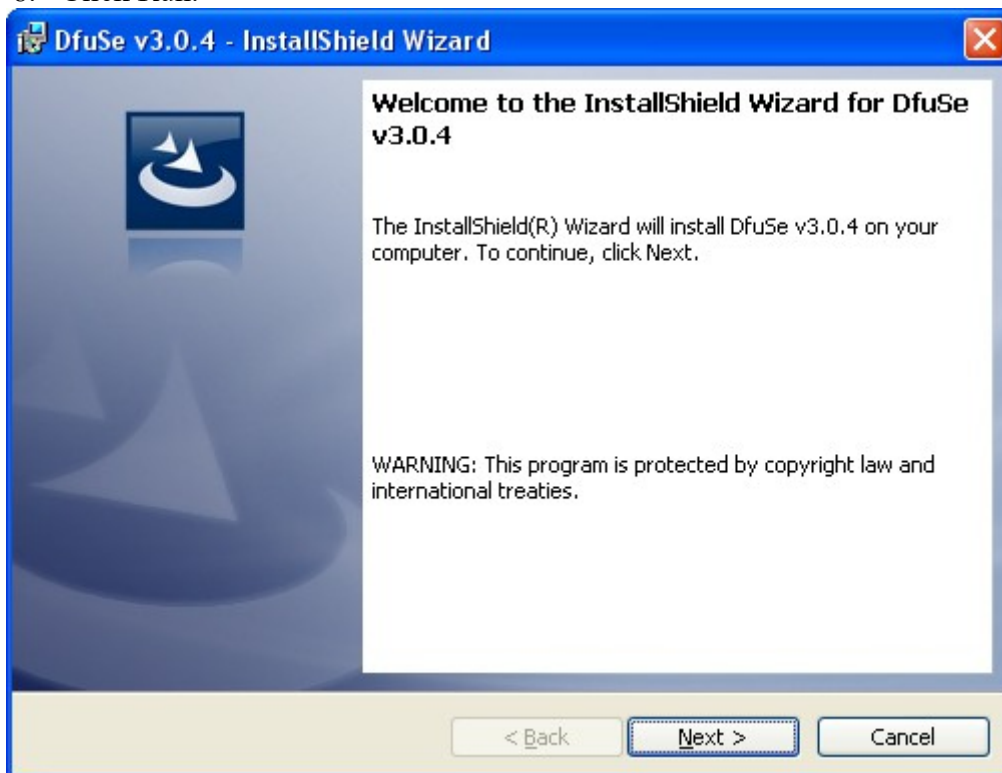
6. Click Finish.



7. Start DfuSe_Demo_V3.0.4_Setup installation program.



8. Click Run.



9. Click Next.

DfuSe v3.0.4 - InstallShield Wizard

Customer Information

Please enter your information.

User Name:
Inqalil2

Organization:
SB

InstallShield

< Back Next > Cancel

10. Enter your information (if you want) and click Next.

DfuSe v3.0.4 - InstallShield Wizard

Ready to Install the Program

The wizard is ready to begin installation.

If you want to review or change any of your installation settings, click Back. Click Cancel to exit the wizard.

Current Settings:

Setup Type:
Typical

Destination Folder:
C:\Program Files\STMicroelectronics\Software\

User Information:
Name: Inqalil2
Company: SB

InstallShield

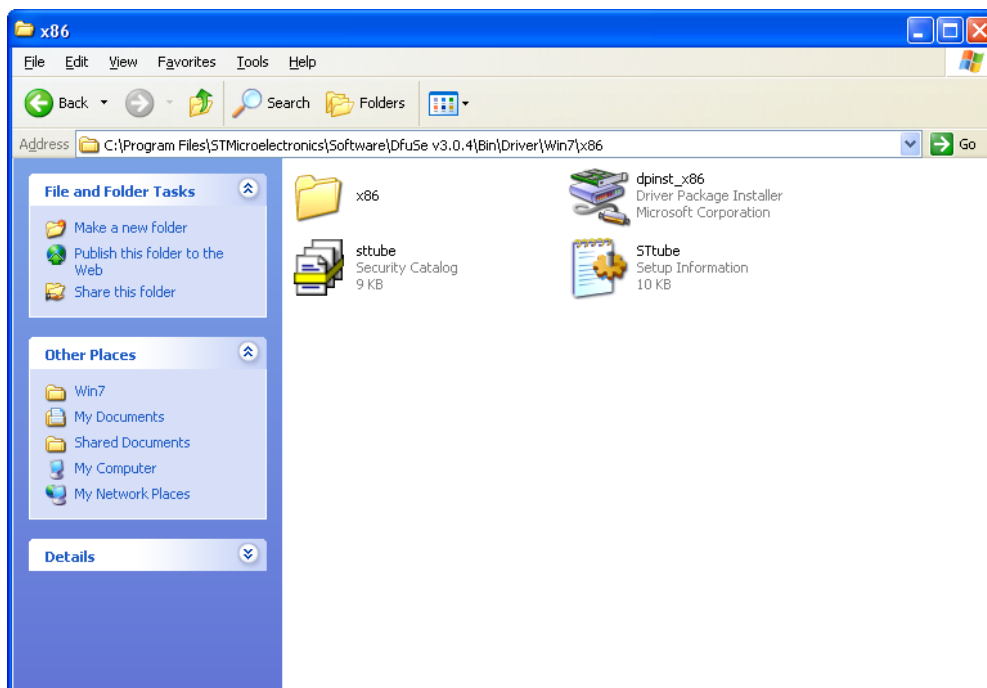
< Back Install Cancel

11. Click Install.



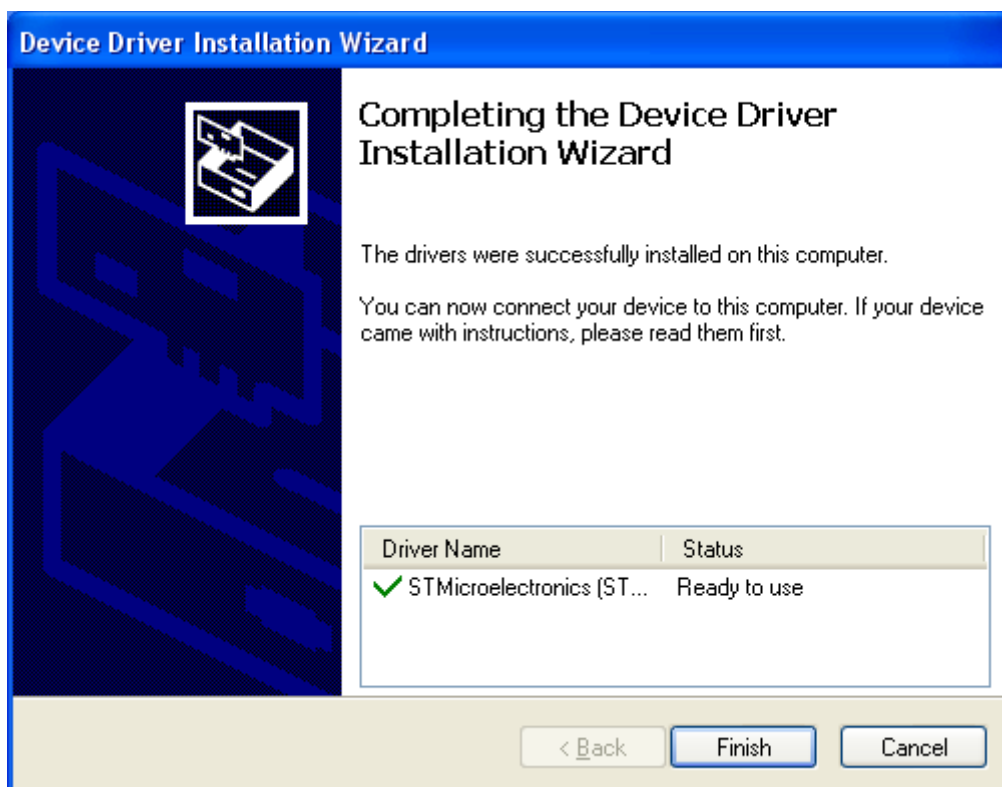
12. Click Finish.

Install USB driver.

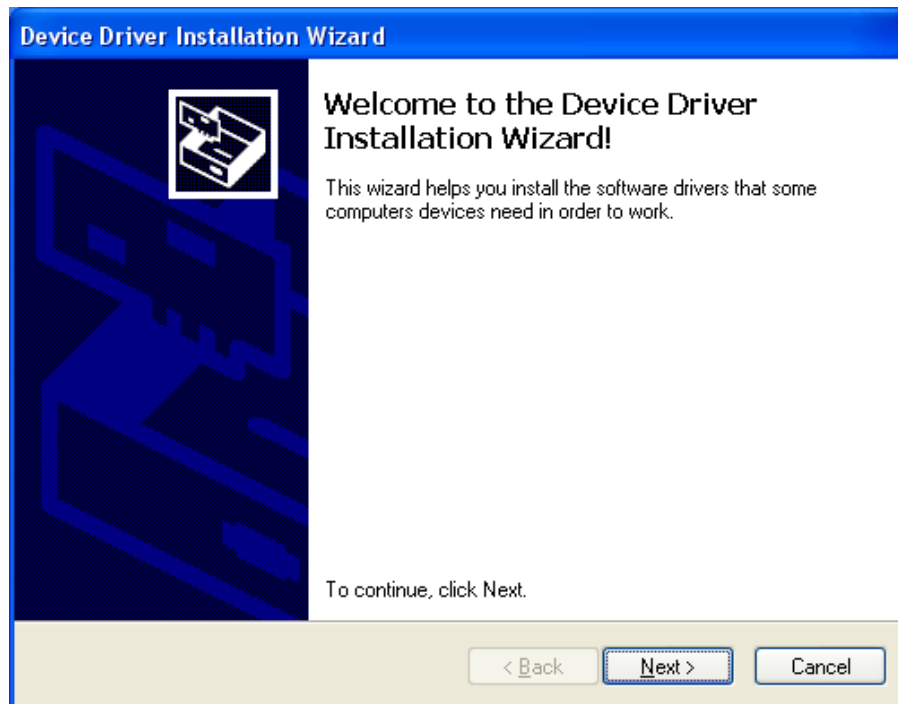


1. Locate the driver location. It should be similar to the above picture. Start the dpinst program. It will be named slightly different in the different windows versions.

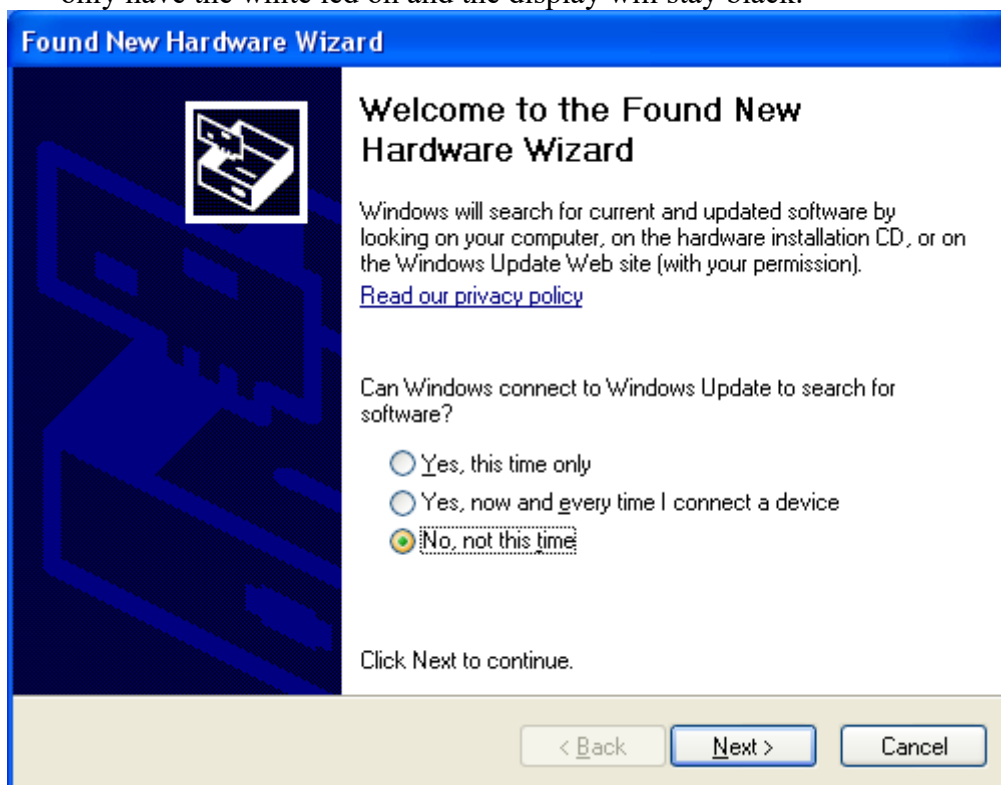
Or You can find the driver.zip separately at the same location where You downloaded this PDF file.



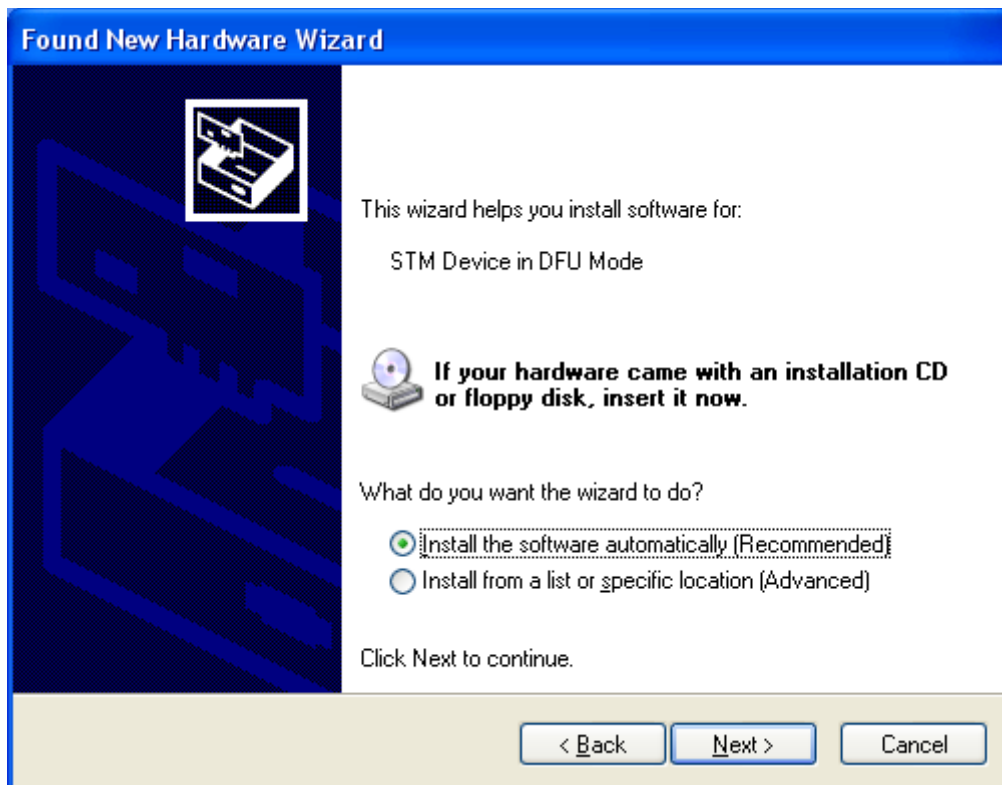
2. Click Finish.



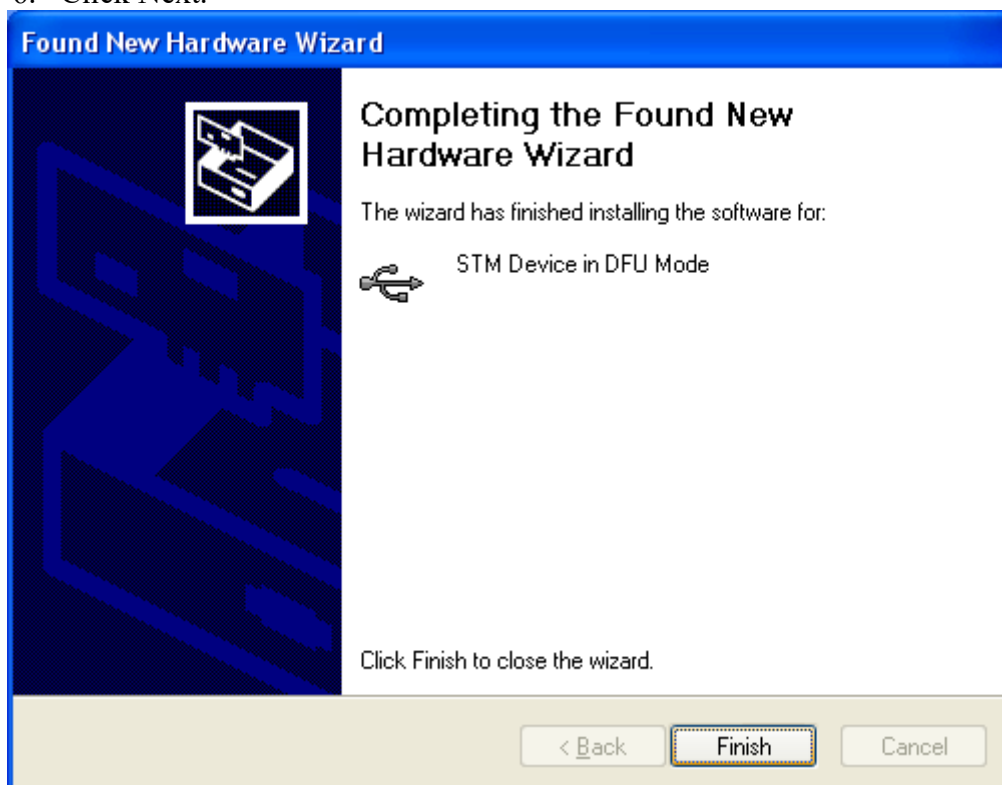
3. Connect EasySplicer to the USB port.
4. Press and hold DOWN button while connecting the charger. The splicer should only have the white led on and the display will stay black.



5. Select No, not this time and click Next.

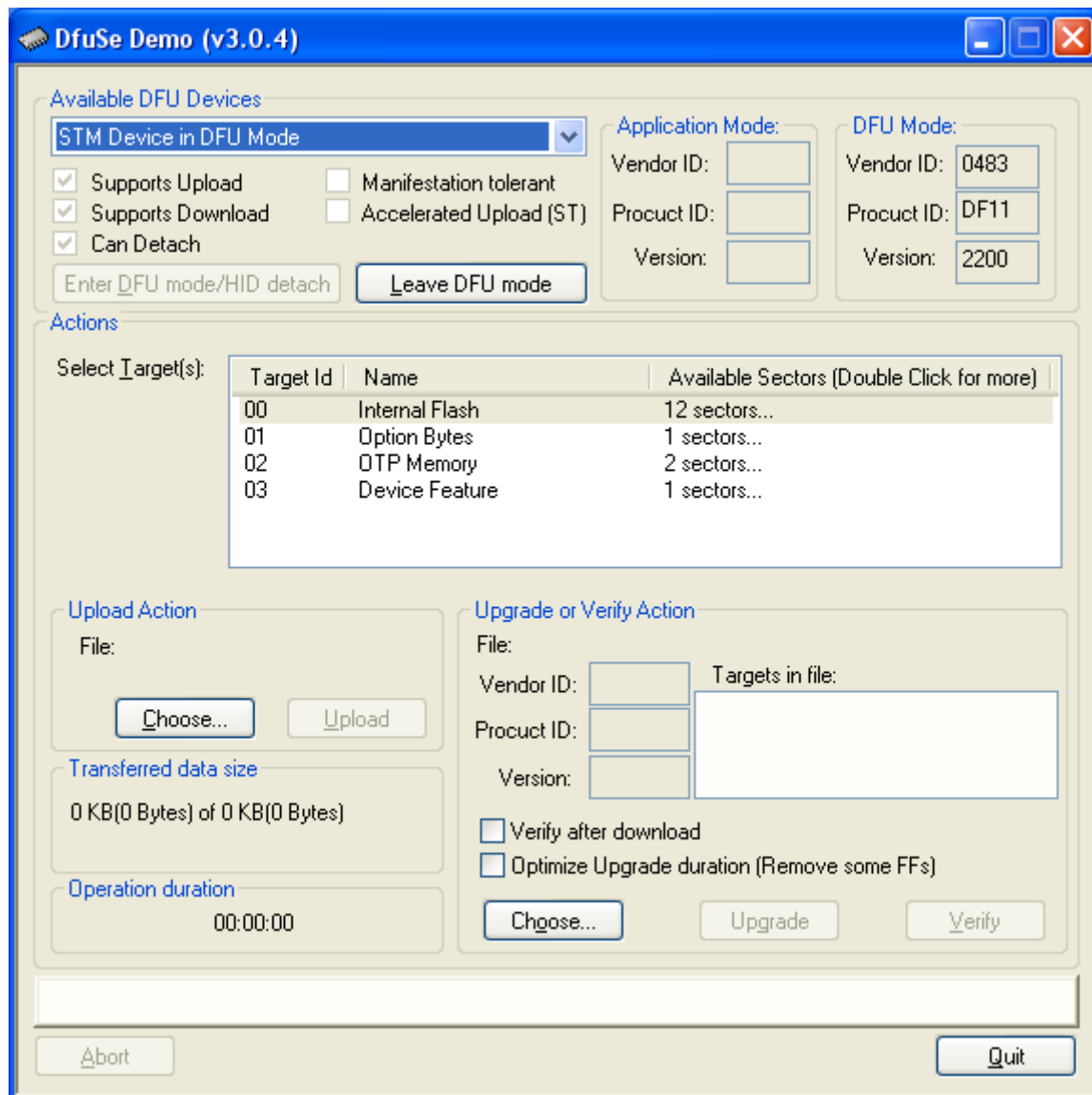


6. Click Next.

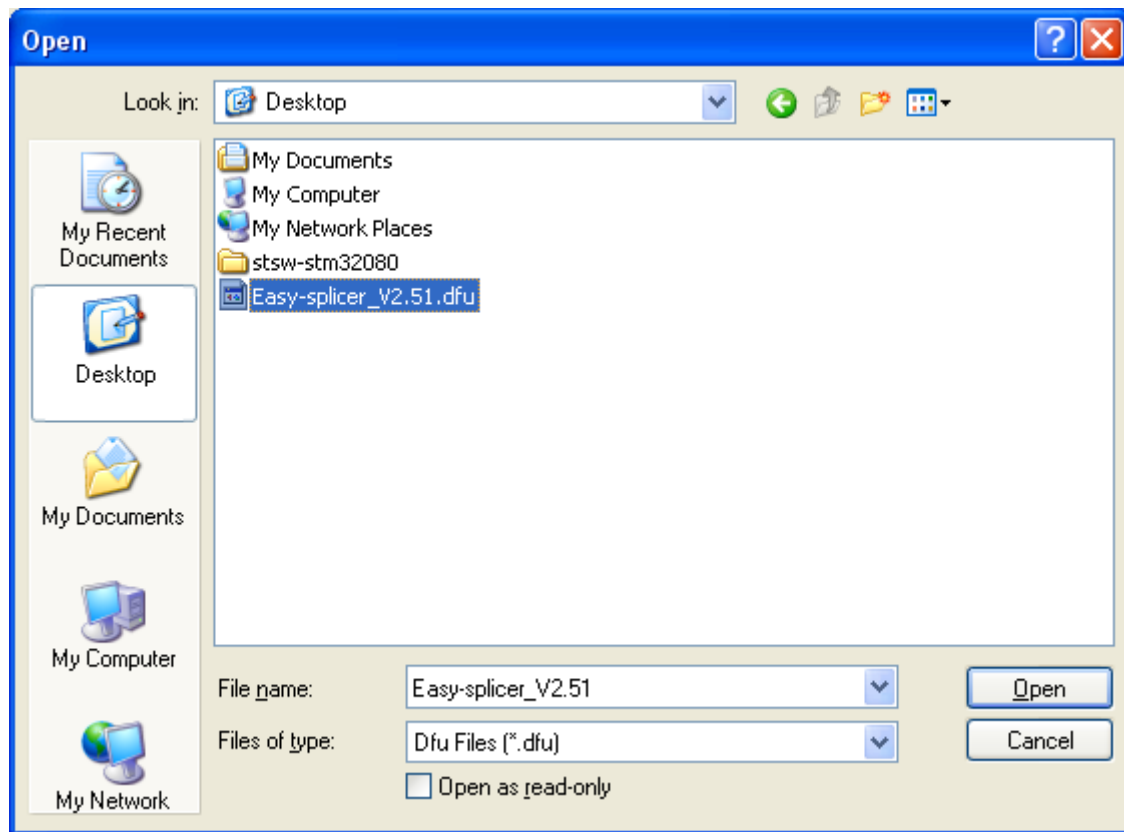


7. Click Finish. Now the drivers are installed.

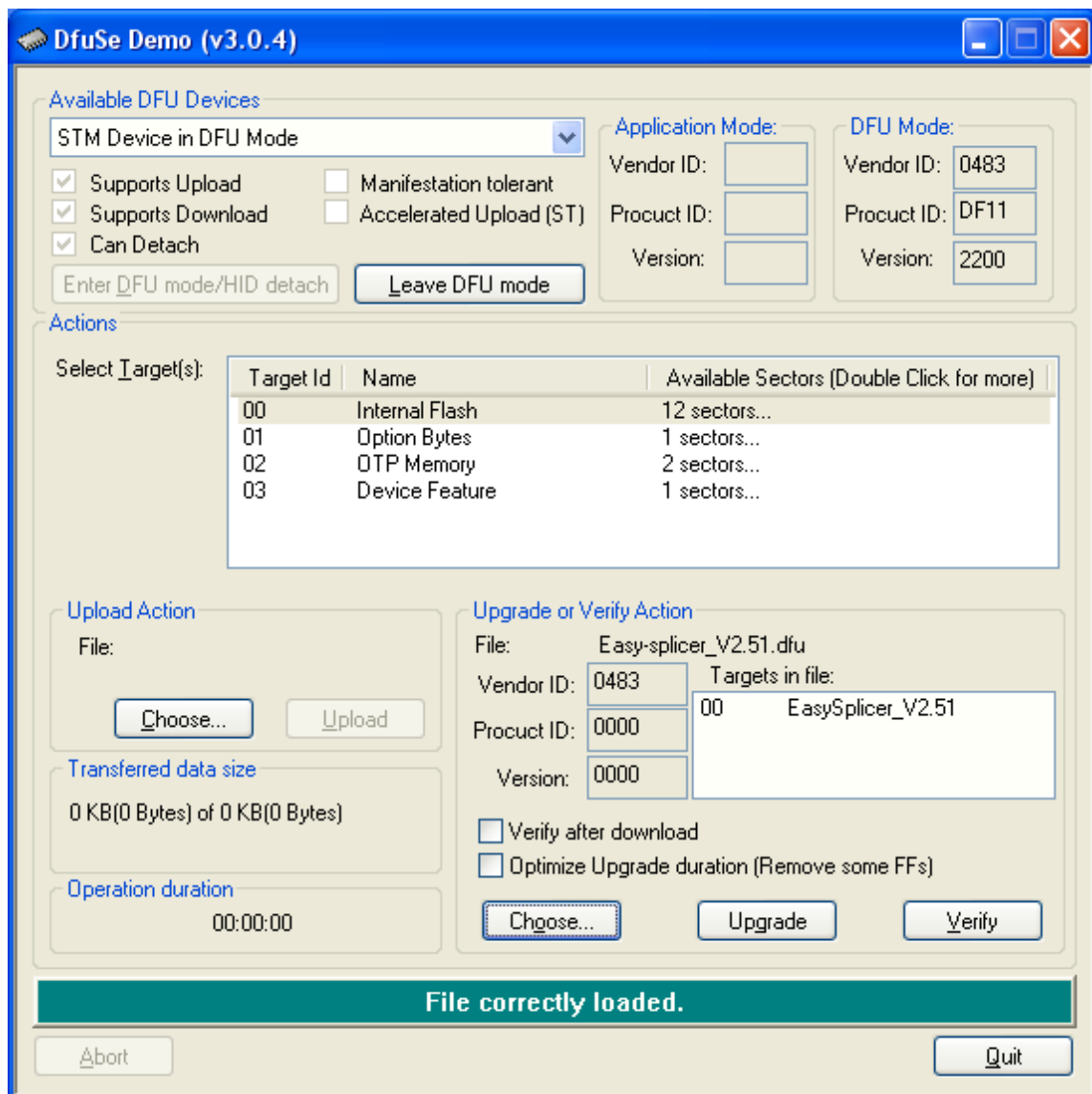
Do the upgrade.



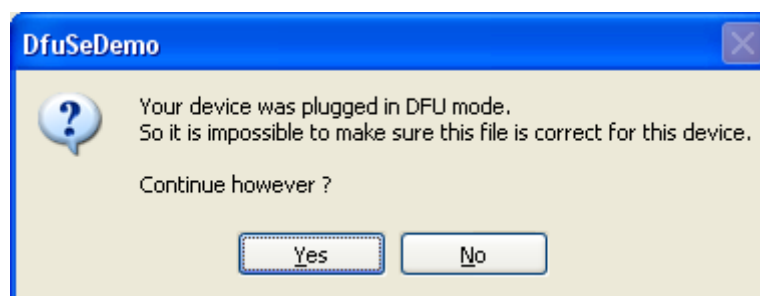
1. Start the DfuSe Demo program. (or it may already be running).
2. Check the box in the upper left corner. It should say STM Device in DFU Mode. If not then connect EasySplicer to the USB port. **Press and hold 'DOWN'-button on the EasySplicer while connecting the charger.** The display on EasySplicer should be black and only the white led under the lid should be on. This indicates bootloader mode.
3. Click the Choose button (**LOWER RIGHT 'Choose' BUTTON**)...



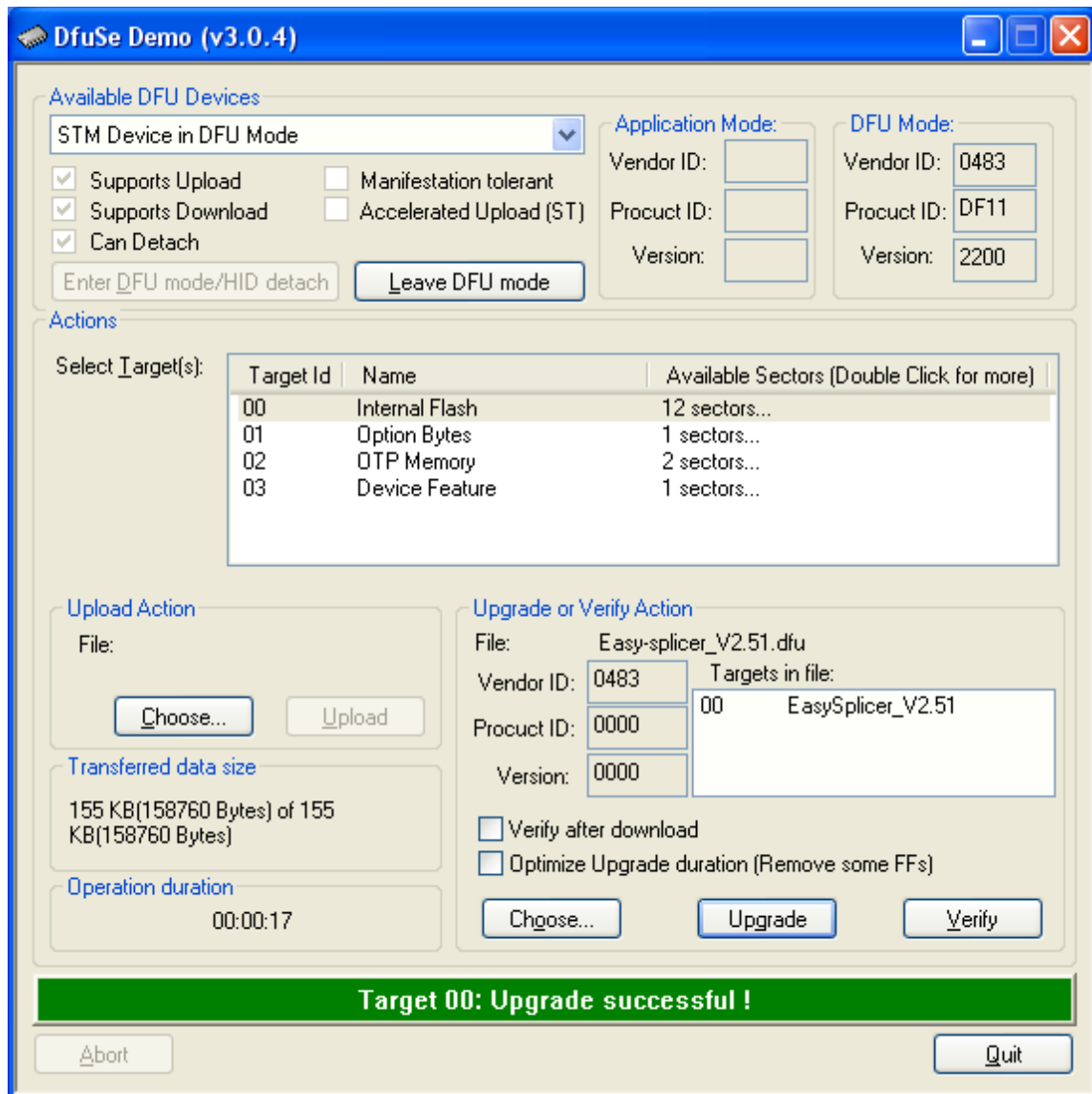
4. Find and select the EasySplicer firmware that you want to install.
5. Click Open.



6. Program should look like this now. Click Upgrade.



7. Click Yes.



8. Upgrade is done. Remove charger and USB cables.